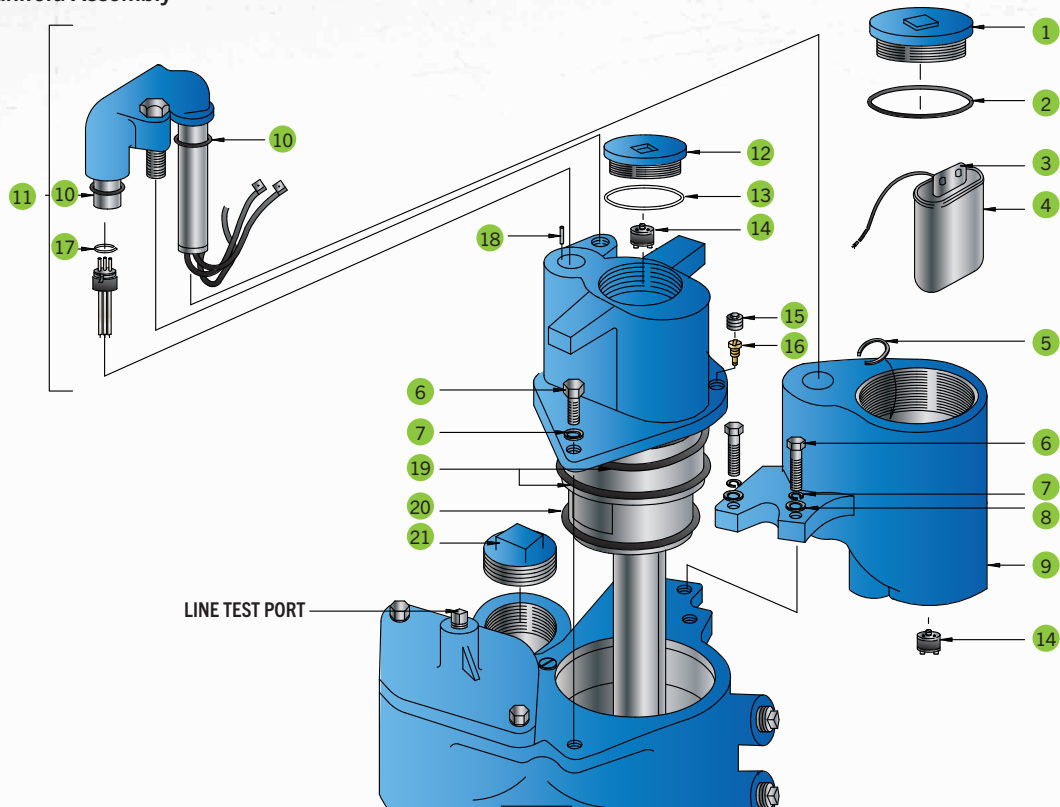


ORDERING INFORMATION CONTINUED

Discharge Manifold Assembly



Item	Model	Description	Qty.
1	400192930	Junction box cover, includes item #2	1
	400192931	Junction box cover, includes item #2 (for AP models)	
2	400210233	O-ring, junction box cover	1
3	400655001	Capacitor boot	1
4	400170931	Capacitor assembly for 1/3 to 1 1/2 hp, 60 Hz, 15µfd, 370 Volt single-phase; includes one black lead	1
	400170934	Capacitor assembly for 2 hp, fixed speed, 60 Hz, 40µfd, 370 Volt single-phase; includes one black lead	
5	400257001	Retaining ring, Female connector	1
6	400258002	3/8-16 × 1 1/4" Hex head bolt, may be purchased locally	4
	602011016	3/8-16 × 1 1/4" Hex head bolt (stainless steel, for AP models)	
7	400285002	3/8 standard lock washer, may be purchased locally	4
	1117703	3/8 standard lock washer (stainless steel, for AP models)	
8	400280001	3/8 standard flat washer, may be purchased locally	2
	403500001	3/8 standard flat washer (stainless steel, for AP models)	
9	400651930	Junction box assembly, includes two #6, #7, and #8	1
	400651931	Junction box assembly (includes item #6, #7, and #8, for AP models)	
10	400210212	O-ring, Female connector	2
11	400200930	Wire connector kit, includes male/female connectors, two #10, one #5, and #18	1
	400200931	Wire connector kit, includes male/female connectors, two #10, one #5, and #18 (for AP models)	
12	400589930	Cover, includes item #13	1
--	400589931	Cover, includes item #13 (for AP models)	
13	400210229	O-ring	1
14	400236903	Contractor's plug, 4-wire	2
15	400259002	3/8" NPT pipe plug, may be purchased locally (403499002, stainless steel for AP models)	1
16	400562901	Syphon jet assembly (400562903 AG compatible)	1
17	400249001	Retaining ring	1
18	400250002	1/8" dia. × 1/2" roll pin	1
19	400333343	AG compatible O-ring, extractable (upper, large)	2
20	400333340	AG compatible O-ring, extractable (lower)	1
21	400259005	2" NPT square head plug	1
	403499003	2" NPT square head plug (stainless steel, for AP models)	